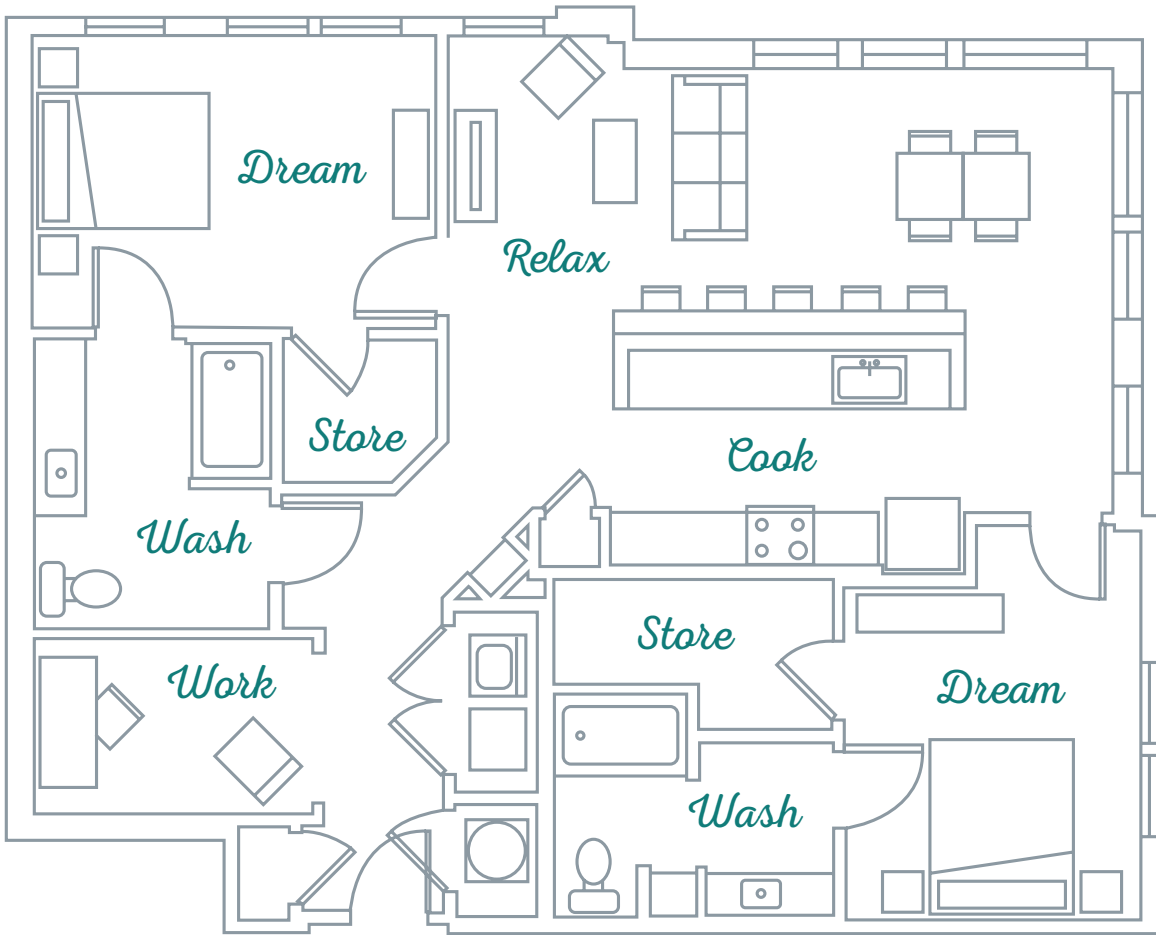




SOLIS
PARK VIEW

B3 | **1,381 SF**
2 BEDROOM 2 BATH



5070 PEACHTREE BLVD | CHAMBLEE, GA 30341 | 404.500.5822 | SOLISPARKVIEW.COM



Information is believed to be accurate, but not warranted. Specification, pricing and availability are subject to change without notice. See agent for details. Artist's Renderings and floorplans are approximate only and are not meant to be exact depictions of the unit. Drawings are not to scale. Your selected floorplan may vary from this illustration due to design configuration and architectural styling. Not all features are available in every apartment. All square footages are approximate.